

Industrial Controls

Solutions for every level of control need, from compressor units or packages to facility to IoT cloud-based multi-facility supervisory



Why M&M Carnot Controls:

- UL-508A listed industrial control panels, rated for extreme conditions
- Built on same software as system controllers, with common HMI and tools
- Optimized software developed for industrial packages
- Easily integrated and meets industrial communication needs

Industrial Package Control:

PLC for Pure™ packaged systems

- Multi-touch display panel with intuitive color graphic HMI for easy control and monitoring
- Configurable real-time signal trend plotting
- Multi-level security protection for system access
- On-line active alarm log, historical alarm log, and operating log
- Equipment run time and energy monitoring
- Remote HMI capability for operation from separate control room
- Built-in VPN for secure remote access and programming updates via the internet
- Built-in OPC-UA server



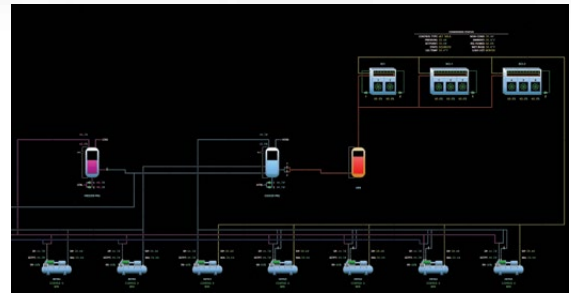
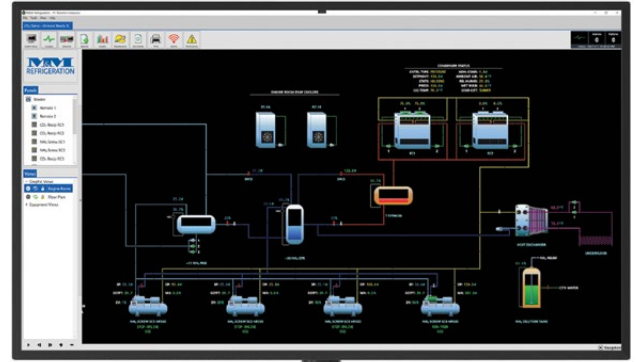
Micro-controller for Aquilon™ industrial packaged systems

- Built on latest V4 hardware to ensure sustainability for years to come
- Updates available using industrial grade USB drive
- Utilizes Windows-based PC Enterprise platform with easy-to-use HMI interface
- All status, alarm data and real-time graphing available
- Detailed operational and trend logs with alarm/failure correlation
- Graphic display of package with real-time parameter updates and animation
- Viewable panel electrical drawings and user manuals
- Email alarm notification (Network connection required)
- On-board 10/100 Ethernet port for PC monitor Enterprise communications or Modbus/TCP

Industrial Facility Control System:

Enterprise refrigeration system controller

- Over 30 years of refrigeration and energy management experience built into every system controller
- New V4 hardware ensures hardware to ensure sustainability for years to come
- Scalable to support facilities of all size
- Utilizes modern Windows-based development tools
- Viewable through connected on-site computer (Touch screen panel PC available)
- Capable to communicate with 3rd party cloud-based platforms (e.g. demand response and blast freezing response)
- Vector-based graphics with zoom/pan for scalability
- Simultaneous viewing of panel and graphic screens (Multiple monitor support)
- User-created custom equipment views
- Alarm notification via email
- Easy to use custom reporting and graphing



Cloud-based Remote Management:

Pulse IoT cloud-based software

- At a glance, easy to view health of your entire network of facilities
- Browser-based HMI viewable from any PC or Mac device, including tablets
- Real-time visibility into your current energy utilization across all of your facilities
- Runtime information to understand the health of equipment
- Weather KPI to fully understand ambient temperature effects on system running conditions
- Warehouse temperature KPI for continuous monitoring of food safety in cold spaces
- Alarms and Failures KPI to support engineering in confidently meeting compliance
- Pressure KPI to monitor system running conditions
- Safety KPI to ensure compliance with regulatory agencies and protect life and health of personnel

